

## Splice Cabinet Combination K1 + NC-326



## Introduction

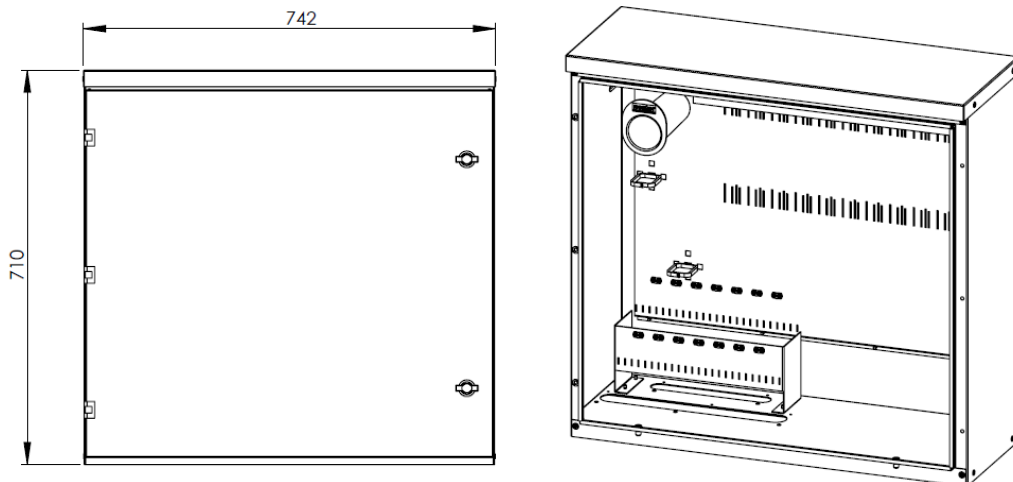
Splice cabinet combination K1 + NC-326 consists of a street distribution cabinet with an unheated splice cabinet mounted inside. The cabinet combination is used for connecting splice trays and connector panels inside the optical network.

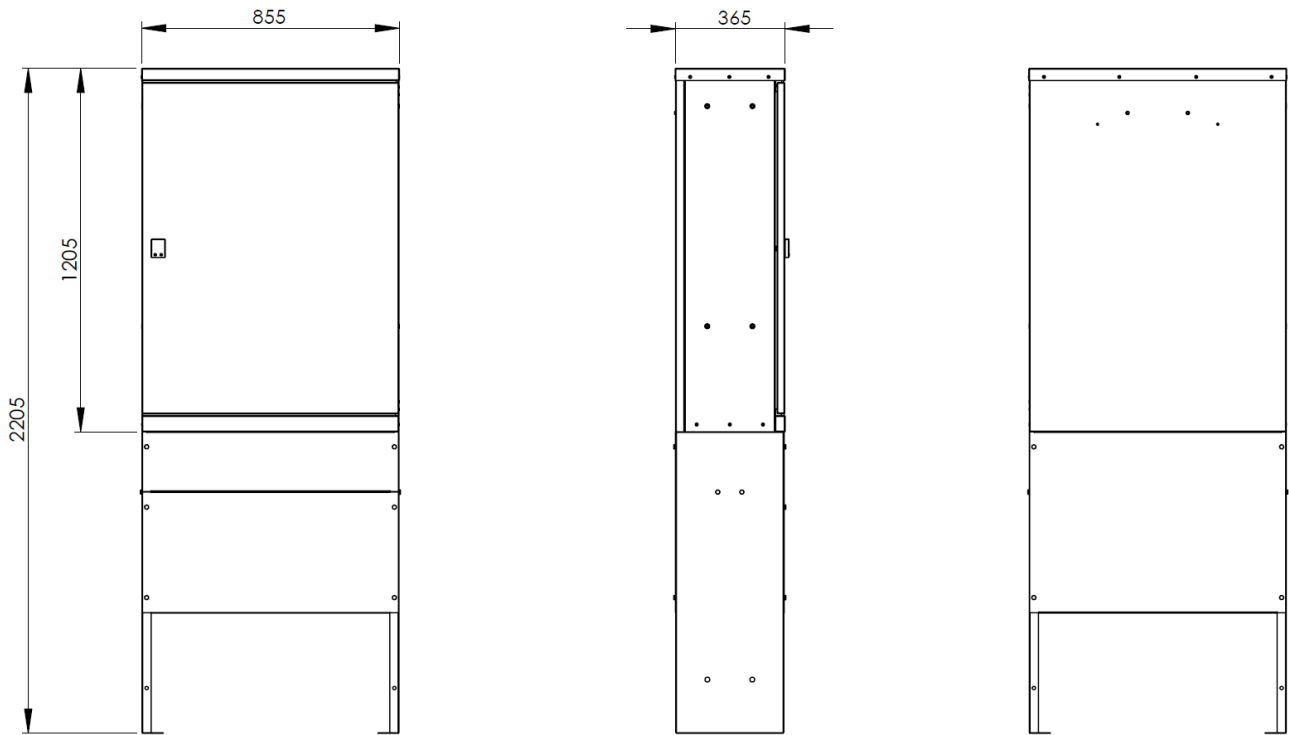
## Features

- Splice cabinet combination for outdoor use, which includes an outdoor cabinet with a stand and a splice cabinet
- Basic assembly
  - LV1334 K1 Street distribution cabinet for outdoor use with a stand
  - LV2047 NC-326 Splice cabinet, installed inside the K1 cabinet
- The outer parts of the K1 cabinet are galvanized and powder-painted steel plate
  - Colour RAL 7008
- Splice cabinet NC-326 is made of galvanized steel plate
  - Unpainted
- User-friendly and robust design
  - Dust-proof construction
  - Slots for splice trays
    - 34 pcs NC-48S splice tray for 48 fiber splices
    - 23 pcs NC-96 splice tray for 96 fiber splices
  - Total capacity up to 2208 fiber splices
  - The inlets of the NC-326 cabinet are wide and equipped with bristle sealings, so it is easy to bring cables inside the cabinet
  - Mounting and grounding bars for incoming cables

## Dimensions

- K1 cabinet with stand 2205 (H) x 855 (W) x 365 (D) mm
- NC-326 710 (H) x 742 (W) x 273 (D) mm





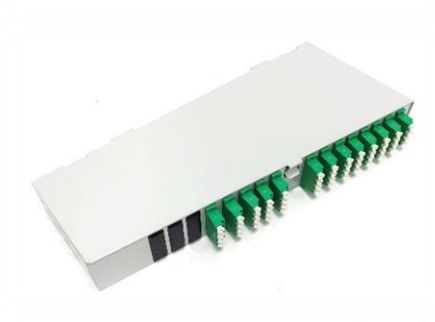
### Optional accessories



*LV1581 NC-48S Universal Splice Tray*



*LV2265 NC-96 Universal Splice Tray*



*LV2037 NC-320 Connector Panel*