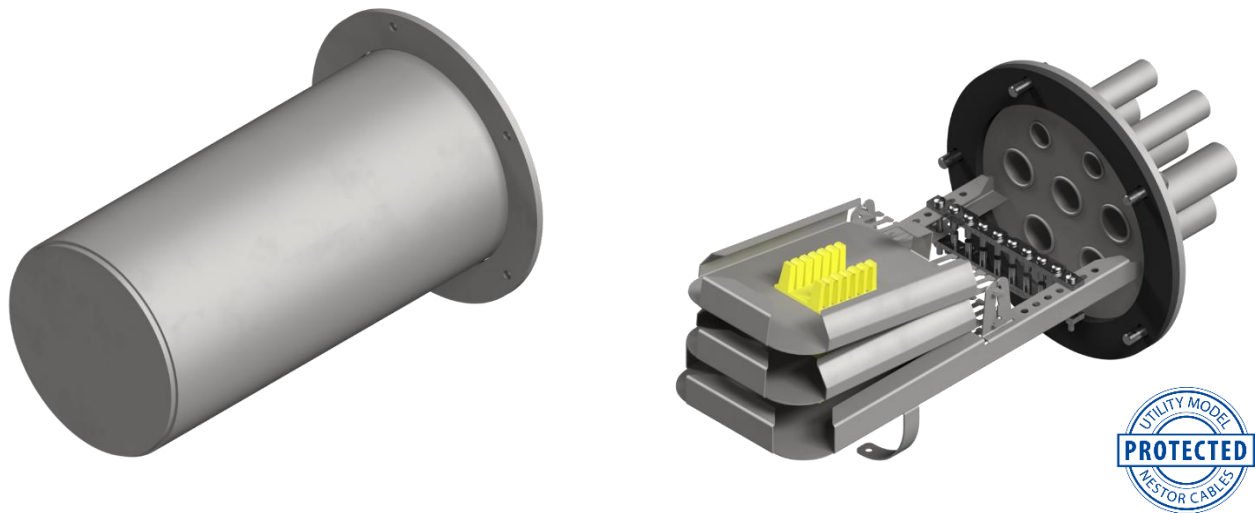


## NESTOR STEEL CLOSURE – SMALL SIZE

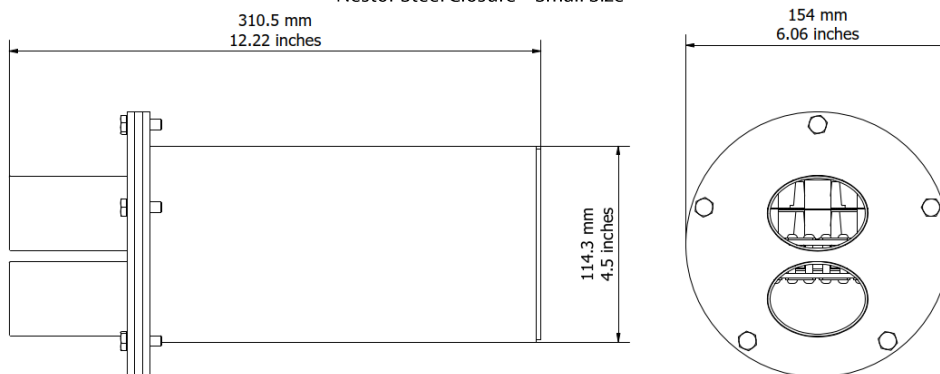


### APPLICATION

Suitable for all direct buried, manhole and pole or wall mounted jointing and branching applications.

### FEATURES

- Customizable according to your needs up to 72 splice capacity.
  - Fixed splice tray for 24 splice capacity.
  - One extra splice tray for 48 splice capacity.
  - Two extra splice trays for 72 splice capacity.
- Perfect for harsh environments.
  - IP68-rated watertight base and dome with screws and secure sealing system.
  - Robust and bulletproof construction.
  - Made of acid-proof stainless steel.
- Easy-to-access mechanical compression port seals or traditional heat-shrinkable port seals.
  - Wide range of mechanical port seals available up to 23 mm.
  - Heat-shrinkable port seals available up to 25 mm.
- Quick and easy installation.
  - Minimizes time spent on site.
  - Increases the speed of deployment.
- Safe area below splice trays for midspan storage.
- Mounting- and grounding bars for incoming cables.
- Quick and easy installation of extra splice trays.
  - Available for heat-shrinkable splice and ANT crimp splice.

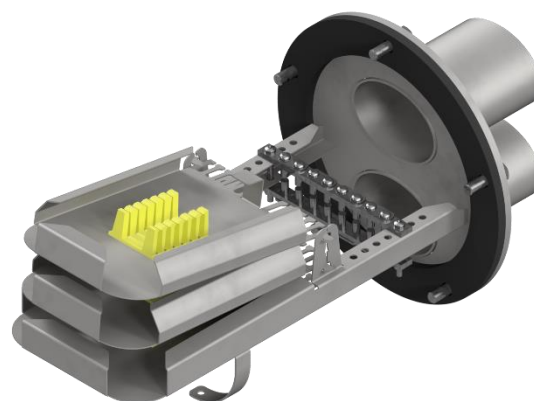


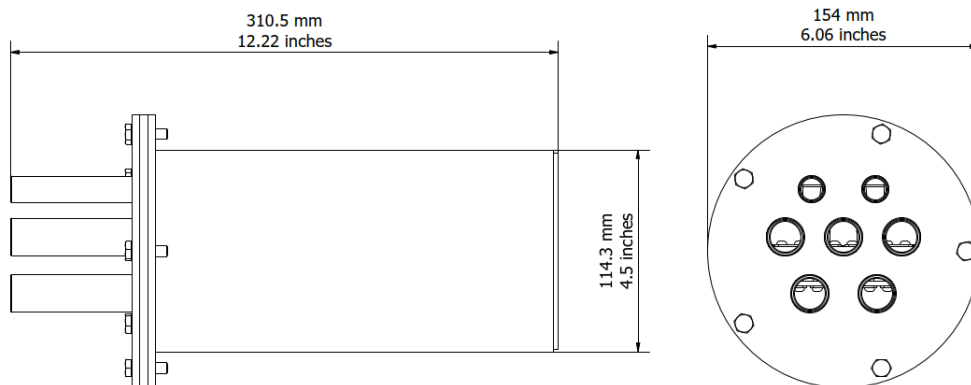
PRODUCT INFORMATION		
Ports	2 pcs	55.6 x 40.9 mm
Cable diameter	5 - 23 mm	
Splice capacity	Up to 72	
Dimensions	310.5 x 154 x 154 mm	12.22 x 6.06 x 6.06 inches
Material	Acid-proof stainless steel	
IP code	IP68	

PRE-CONFIGURED PRODUCT CODES				
Code	Description	Cable port sealing type	Splice capacity	Splice type
LV3642	NSC-S-MCP-24-HS	Mechanical compression	24	Heat-shrinkable
LV3643	NSC-S-MCP-24-ANT	Mechanical compression	24	ANT crimp
LV3644	NSC-S-MCP-48-HS	Mechanical compression	48	Heat-shrinkable
LV3645	NSC-S-MCP-48-ANT	Mechanical compression	48	ANT crimp
LV3646	NSC-S-MCP-72-HS	Mechanical compression	72	Heat-shrinkable
LV3647	NSC-S-MCP-72-ANT	Mechanical compression	72	ANT crimp

MECHANICAL COMPRESSION SEALS				
Code	Description	Min. cable diameter	Max. cable diameter	Midspan access
LV2725	Nestor Mech Seal 6 x 7mm	5.0 mm	7.5 mm	No
LV2543	Nestor Mech Seal 6 x 10mm	7.5 mm	10.5 mm	No
LV2544	Nestor Mech Seal 4 x 15mm	10.5 mm	15.3 mm	Yes
LV2545	Nestor Mech Seal 2 x 18mm	15.3 mm	18.5 mm	Yes
LV2546	Nestor Mech Seal 2 x 23mm	18.5 mm	23.1 mm	Yes

BASIC ASSEMBLY		
Dome closure	1 pc	
Heat-shrink plugs for unused ports	1 pc	
Heat-shrink tube 56/16 mm	2 x 200 mm	
Branching part for midspan access	2 pcs	
Grounding clip for 16 mm <sup>2</sup> wire	1 pc	
Grounding wire 2,5 mm <sup>2</sup>	2 pcs	
Corrugated cable clamp	2 pcs	
Oetiker hose clamp 7-9 mm	2 pcs	
Oetiker hose clamp 8-11 mm	2 pcs	
Cable tie 3x100 mm	1 x 12 pcs	
Velcro tape loop	390 mm	
Cleaning tissue	1 pc	
Silica gel 25 g	1 pc	
Cardboard box	470 x 305 x 170 mm 18.5 x 12 x 6.7 inches	1 pc

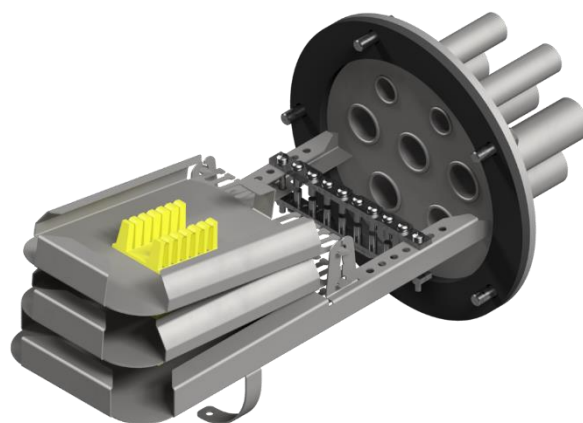




PRODUCT INFORMATION		
Ports	2 pcs 5 pcs	Ø 12 mm Ø 17.3 mm
Cable diameter	6 - 25 mm	
Splice capacity	Up to 72	
Dimensions	310.5 x 154 x 154 mm	12.22 x 6.06 x 6.06 inches
Material	Acid-proof stainless steel	
IP code	IP68	

PRE-CONFIGURED PRODUCT CODES				
Code	Description	Cable port sealing type	Splice capacity	Splice type
LV3648	NSC-S-HSP-24-HS	Heat-shrinkable	24	Heat-shrinkable
LV3649	NSC-S-HSP-24-ANT	Heat-shrinkable	24	ANT crimp
LV3650	NSC-S-HSP-48-HS	Heat-shrinkable	48	Heat-shrinkable
LV3651	NSC-S-HSP-48-ANT	Heat-shrinkable	48	ANT crimp
LV3652	NSC-S-HSP-72-HS	Heat-shrinkable	72	Heat-shrinkable
LV3653	NSC-S-HSP-72-ANT	Heat-shrinkable	72	ANT crimp

BASIC ASSEMBLY		
Dome closure	1 pc	
Heat-shrink plugs for unused ports	5 pcs	
Heat-shrink tube 33/8 mm	5 x 200 mm	
Heat-shrink tube 22/6 mm	2 x 200 mm	
Grounding clip for 16 mm <sup>2</sup> wire	1 pc	
Grounding wire 2,5 mm <sup>2</sup>	2 pcs	
Corrugated cable clamp	2 pcs	
Oetiker hose clamp 7-9 mm	2 pcs	
Oetiker hose clamp 8-11 mm	2 pcs	
Cable tie 3x100 mm	1 x 12 pcs	
Velcro tape loop	390 mm	
Cleaning tissue	1 pc	
Silica gel 25 g	1 pc	
Cardboard box	470 x 305 x 170 mm 18.5 x 12 x 6.7 inches	1 pc



## CONFIGURED PRODUCTS

NSC - \_\_\_\_\_ - \_\_\_\_\_ - \_\_\_\_\_ - \_\_\_\_\_

A diagram consisting of four separate square boxes arranged horizontally. Each box contains a single blue number: 1, 2, 3, and 4 from left to right.

## 1 Select closure size

XS = Extra small

S = Small

M = Medium

L = Large

## 2 Select cable port sealing type

MCP = Mechanical compression port

HSP = Heat-shrinkable port

### 3 Select splice capacity

12 = Up to 12 splices

24 = Up to 24 splices

48 = Up to 48 splices

72= Up to 72 splices

96 = Up to 96 splices

192 = Up to 192 splices

288 = Up to 288 splices

#### 4 Select splice type

HS = Heat-shrinkable splice

ANT = ANT crimp splice

Note: Configurator is for reference only and all options may not be available or compatible with other options listed. Please contact your Nestor Cables representative for assistance in product configurations.